

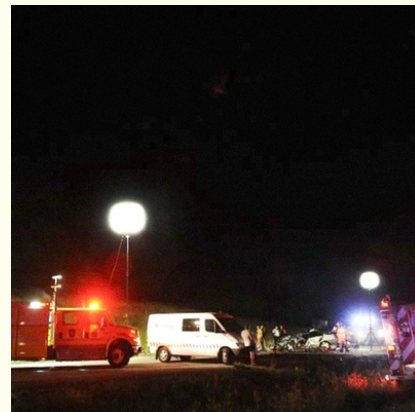
## Emergency Lighting Led Balloons 1000W Stadium Light Towers For Sport Field Area

Our Product Introduction

for more products please visit us on [ushineraylight.com](http://ushineraylight.com)

### Basic Information

- Place of Origin: Guangdong, China
- Brand Name: USHineray
- Certification: ETL, EMC, RoHS, CE, FCC, LVD
- Model Number: YXR-BL-1000W-A
- Minimum Order Quantity: 1pcs
- Payment Terms: T/T, Paypal, Western Union



### Product Specification

- Beam Angle(°): Omni Illumination
- Lumen: 160000lm
- Dimmable: 4-Level Dimming
- Product Name: 1000W LED Balloon Light Tower
- Application: Sport Stadium Illumination, Industrial Illumination, Roadwork Lighting
- Power: 1000W
- Tripod Max Height: 3.8m, 4.2m, 4.6m Or Customized
- Material: Aluminum + S.steel + PC + Fabric
- Control: Switch On-off, Knob Switch For Dimming, Remote Control
- Balloon Diffuser: Yellow/Blue/Black Top-Reflective Diffuser Or All White
- Balloon Size: D1100\*H860 Or Customized
- Input Voltage: 90~305Vac
- Power Range: 60W~1400W



### More Images



## Product Description

Emergency Lighting LED Balloons 1000W Stadium Light Towers for Sport Field Area

The Emergency Lighting LED Balloons, with 1000W Stadium Light Towers, are ideal for sport field areas. This light tower provides bright and uniform lighting, ensuring that sports events and activities are well-lit, even during emergencies.

### Product Features

**Advanced filter:** Prevents entry of mosquitoes, dust, and debris for optimal performance and longevity.

**360-degree lighting:** Offers comprehensive illumination.

**Soft, non-glare light:** Diffused and lightweight for easy portability.

**High efficiency:**  $\geq 160\text{lm/W}$  with minimal power consumption.

**Adjustable brightness:** Dimmable via knob device or remote control; Includes on-off switch.

**Simple setup:** Foldable tripod and cover for quick assembly.

**Weatherproof balloon:** Waterproof, UV resistant, and fire retardant, durable.

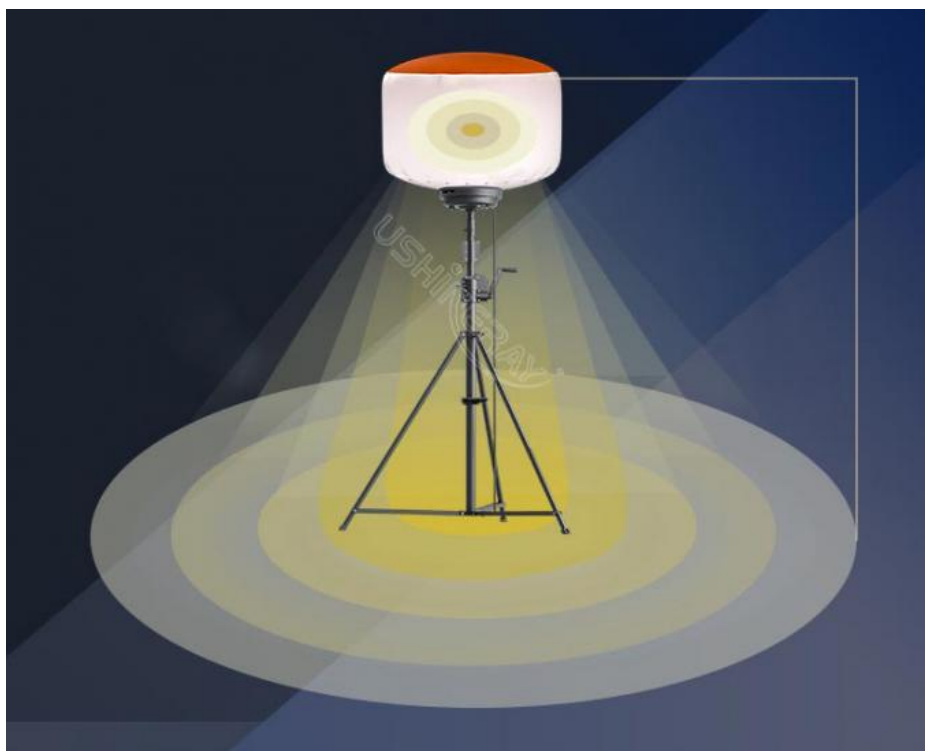
### Product Parameter

Item No.	YXR-BL-1000W-A
Power	1000W
Input Voltage	AC90-305V
Lumen(lm)	160000
Weight(kg)	26.1
Inflated Dimension	D1100*H860
Light Efficacy	160 $\pm$ 5% lm/W
CCT	5000K or 3000K
CRI	$\geq 70\text{Ra}$
LED Chips	Lumileds 2835
LED Driver	Inventronics
PF	$\geq 0.95$
Dimming Control Mode	Knob switch or Remote control
Remote Control Distance	60m
Life Span	$\geq 50000$ hrs
IP Grade	IP65
Cable Length(m)	10
Tripod Height(min-max)	1.62~3.8m
Tripod Collapsed Height	1.8m
Tripod Footprints	1.4m
Tripod Weight	11.5kg

### Product Details



Inflatable LED Balloon Light  
 150W~1400W, wide area coverage with 360°illumination  
 High Efficiency 160lm per watt  
 NO stroboscope; No Glare; Easy Set; Vehicle-used; Dimmable; Rapid; Heat-dissipation; Diffused Light



1000W Illumination; Lumen up to 160000m;  
 Illumination range up to 6400 m<sup>2</sup> (Light on the tripod at 4.8m)



#### Filtration device

Prevents mosquitoes, insects, dust, and other debris from entering the lamp to ensure optimal performance and a longer lifespan. Effectively filter out dust and insects

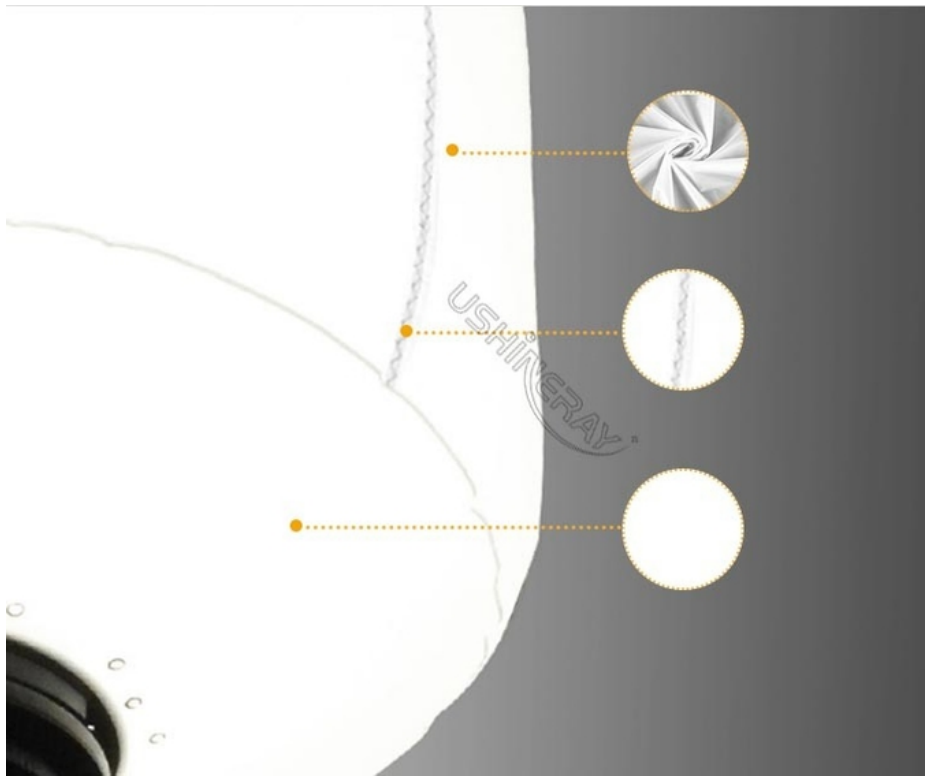


Dimmable; Remote control distance up to 60m, as well as with Brightness adjustment knob



Self-Inflating Balloon  
Made of tear-resistant rip-stop fabric, offers 360-degree free lighting and inflates with one switch.





Coated rip-stop nylon material; 100% nylon composition; Seams stitched in a zigzag pattern; Durable water repellent (DWR), and additional UV and fire-resistant (FR) coatings



Brand Lumileds High Brightness LED Chips  
Low decay, longer span life.



World famous brand Inventronics or Moso LED driver;  
Good stability, high efficiency, flicker free, anti-surge.



#### Ventilation holes

Facilitate efficient heat dissipation preventing overheating, extend the lifespan, enhance performance, ensure safety.



IP65 waterproof, sand proof, UV resistant, flame retardant.

#### Applications

Perfectly suited for Emergency Repairs, Fire & Rescue, Search and Rescue, Forensic Lighting, Construction, Outdoor Activities, Disaster Relief, Law Enforcement Support, Flagger Stations, Mining, Film Shooting, Road Construction and Maintenance, Landscaping, Parties and Special Events, Camping, Farming and Agriculture, Temporary Lighting.

## PRODUCTION SITE



### FAQ

**Q1. Are you a manufacturer?**

Yes, we have our factory with over 10 years of R&D and manufacturing experience based on ISO quality management since 2011.

**Q2. Do you have any MOQ limit for LED light orders?**

No MOQ, 1pc for sample checking is available.

**Q3. Can I get a lower price for a large quantity of orders?**

Yes, please check with our sales staff for the details.

**Q4. How about the lead time of ordering?**

Our standard sample lead time is 3-5 days, and normal order lead time is 7-10 days. For the large order lead time, please also check with our sales team.

**Q5. Can you provide OEM and ODM services?**

We can provide OEM and ODM products, with customized label designs on the product and carton box. Or customized carton box, and laser print logo on the lamp fixture.

**Q6. What is the payment terms of your formal order?**

We accept payment via TT, Paypal, and Western Union, and we offer EXW, FOB, CIF, and CFR terms.

**Q7. How to deal with the defective?**

All of our products are produced in a strict quality control system, the defective rate is less than 0.2% according to our shipment records. We offer a 3- 5 years warranty for this product, if there is any defective during the warranty, please provide pictures or videos of the working situation of the defective lights, and we will ship the new lights to you within a few days or send it together with your next order.

**USHINERAY** Shenzhen Yongxinrui Lighting Technology Co., Ltd.

+8613410523891

joy@ushineray.com

ushineraylight.com

4F, Building C, Junxing Optoelectronic Industrial Park, Fuyuan 2nd Road, FuHai Street, Bao'an District, Shenzhen



